

# Werefkin

ø133 Suspended light fitting for diffuse 360° lighting



Sammode

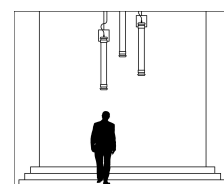


# Werefkin

ø133 Suspended light fitting for diffuse 360° lighting



With its diffusing housing that illuminates through 360°, the Werefkin is the ideal suspended light for making a lit space look great. Its boosted flow version enables large areas to be lit without glare. With the convenient and smart vertical suspension kit, punctuate your space by playing with repetition or toy with different lengths for a candelabra effect.



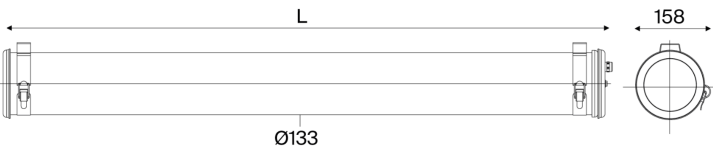


# Werefkin

ø133 Suspended light fitting for diffuse 360° lighting



Sammode



## Werefkin 360° - Comfortable Flux

3000 K




Flux (lm)	L (mm)	Designation	Code	Watt
3450	995	WEREFKIN 133 360° 1000 3450-830 SUSP	80280003	34
4600	1295	WEREFKIN 133 360° 1300 4600-830 SUSP	80280007	44
5750	1595	WEREFKIN 133 360° 1600 5750-830 SUSP	80280005	54

## Werefkin 360° - Reinforced Flux

3000 K

Flux (lm)	L (mm)	Designation	Code	Watt
4500	995	WEREFKIN 133 360° 1000 4500-830 SUSP	80280004	45
6000	1295	WEREFKIN 133 360° 1300 6000-830 SUSP	80280008	59
7500	1595	WEREFKIN 133 360° 1600 7500-830 SUSP	80280006	73

## Options

End caps & fixing straps finish	Fixing straps	Materials
 End caps & straps painted Coal RAL7021	 Fixing straps Fixing straps with HSHC screw	Coextruded polycarbonate/PMMA housing for Indoor/Outdoor use (650°) Polycarbonate housing (960°C) -
COAL		Color temperature
		- 2700K 827
		BRV 3000K 830
		4000K 840
	 Straps and wires for vertical suspension	Lighting management
		Electronic gear unit for DALI dimming RD
		Electronic gear unit for push button RS
		Switch-off warning function (for sensor/timer) RC
		Casambi Bluetooth control RB
		Electrical class
		Class I CL1
		Class II -

## Accessories

To be ordered separately



Stainless steel cable plate kit (IP40)	17500020	Pre-cabling 3m 3G1.5 (3 wires)	CAB0008
		Braided tinned copper cable	
		Pre-cabling 3m 5G1.5 (5 wires)	CAB0011
		Braided tinned copper cable	





# Werefkin

ø133 Suspended light fitting for diffuse 360° lighting

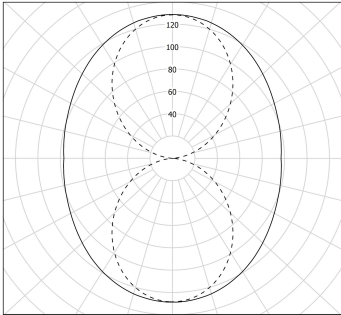


Sammode

## Specification



## Photometry



cd/klm  
C0 - C180 - - - C90 - C270

ULR = 50%

## Technical characteristics

Light source	High-efficiency removable LED module (CRI>80, 3 SDCM) 50 000 h L80/B10 at 25°C Photobiological hazard : None (RG0)
Optics	Specific satin-finish primary diffuser optics Use of a satin-finish housing or internal film for a homogeneous light distribution
Lighting comfort	Luminance control through diffusing optical systems Omnidirectional lighting with high lighting comfort
Control gear	Constant current driver (non-dimmable)
Supply voltage	220-240V 50/60Hz
Electrical class	Class II
Operating temperature	-20°C to +30°C

## Easy intallation and maintenance

Connection	With nickel-coated brass cable gland for cable Ø 5-14 mm To a 3 x 2,5 mm <sup>2</sup> disconnectable terminal block
Opening and closing	Quick, with just one screw
Mounting	2 stainless steel fixing straps (with variable centre distance) Provided with 2 suspension kits and 3 m of steel wire
LED engine maintenance	Patented sliding maintenance system Easily removable LED modules and driver

## Materials

Housing	Ø133 Co-extruded polycarbonate/PMMA for inside/outside use
End caps and fixing straps	304L stainless steel

## Standards

Waterproofness	IP66, IP68, IP69K
Resistance to IK shocks	IK10
Fire resistance	650°C