

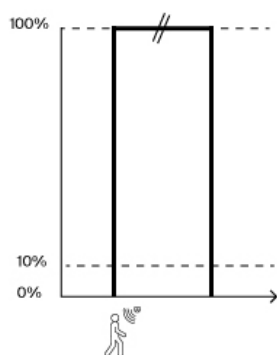
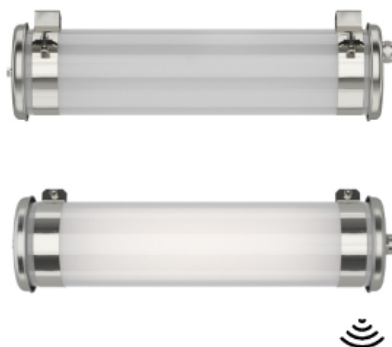
Vouet Sensor

ø100 wall or ceiling light with integrated sensor

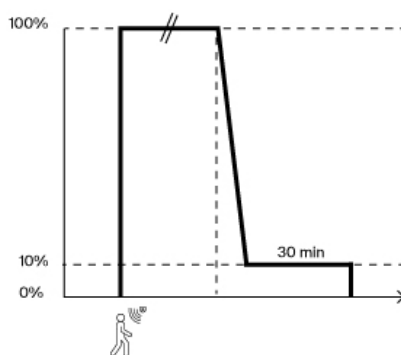


Vouet Sensor

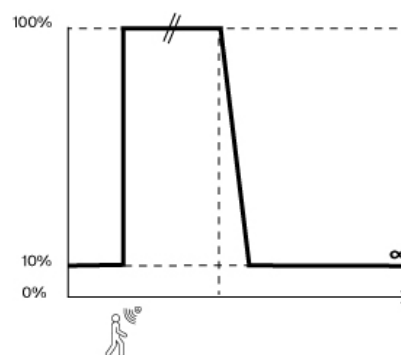
ø100 wall or ceiling light with integrated sensor



1. Vouet Sensor ON-OFF

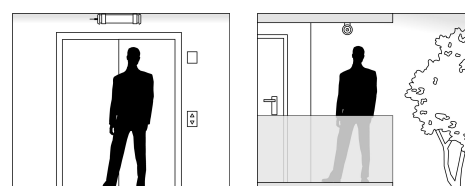


2. Vouet Sensor ON-30 min@10%



3. Vouet Sensor ON-stand by 10%

With its invisibly integrated High Frequency detector, the Vouet Sensor lights up automatically in response to presence and light levels. An ideal alternative to traditional bulkhead lights for illuminating outdoor passageways or small occasionally-frequented spaces, the Vouet ensures optimal lighting comfort and its compact size makes it easy to fit in. For minimum safety requirements, the permanent standby mode maintains 10% light output until the next detection.



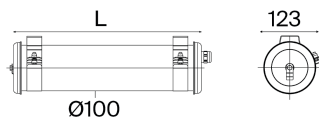


Vouet Sensor

ø100 wall or ceiling light with integrated sensor



Sammode



Vouet Sensor ON - OFF

Profile 1: Direct off mode in the absence of detection

| T (K) | Flux (lm) | L (mm) | Designation | Code | Watt |
|-------|-----------|--------|-----------------------------------|----------|------|
| 3000 | 800 | 420 | VOUET SENSOR 100 400 800-830 BRV | 15675043 | 9 |
| | 1150 | 420 | VOUET SENSOR 100 400 1150-830 BRV | 15675044 | 12 |
| 4000 | 800 | 420 | VOUET SENSOR 100 400 800-840 BRV | 15675045 | 9 |
| | 1150 | 420 | VOUET SENSOR 100 400 1150-840 BRV | 15675046 | 12 |

Vouet Sensor ON - 30min @ 10%

Profile 2 (RC): 10% advance warning mode for 30 min

| T (K) | Flux (lm) | L (mm) | Designation | Code | Watt |
|-------|-----------|--------|--------------------------------------|----------|------|
| 3000 | 800 | 420 | VOUET SENSOR 100 400 800-830 RC BRV | 15675013 | 9 |
| | 1150 | 420 | VOUET SENSOR 100 400 1150-830 RC BRV | 15675014 | 12 |
| 4000 | 800 | 420 | VOUET SENSOR 100 400 800-840 RC BRV | 15675016 | 9 |
| | 1150 | 420 | VOUET SENSOR 100 400 1150-840 RC BRV | 15675017 | 12 |

Vouet Sensor ON - stand-by 10%

Profile 3 (RCP): 10% permanent standby mode

| T (K) | Flux (lm) | L (mm) | Designation | Code | Watt |
|-------|-----------|--------|---------------------------------------|----------|------|
| 3000 | 800 | 420 | VOUET SENSOR 100 400 800-830 RCP BRV | 15675019 | 9 |
| | 1150 | 420 | VOUET SENSOR 100 400 1150-830 RCP BRV | 15675020 | 12 |
| 4000 | 800 | 420 | VOUET SENSOR 100 400 800-840 RCP BRV | 15675021 | 9 |
| | 1150 | 420 | VOUET SENSOR 100 400 1150-840 RCP BRV | 15675022 | 12 |

Options

| Fixing straps | Color temperature | Lighting management |
|---|-------------------|--|
| | 2700K | 827 Electronic gear unit for DALI 2 |
| | 3000K | 830 dimming |
| | 4000K | 840 Electronic gear unit for push button |
| Electrical class | | Switch-off warning function (for sensor/timer) |
| Class I | | CL1 Permanent standby mode 10% |
| Class II | | - function |
| Fixing straps | - | |
| Fixing straps with HSHC screw | BRV | |
| Fixing straps with tamper-resistant Torx screw | BRVT | |
| Materials | | |
| Coextruded polycarbonate/PMMA housing for Indoor/Outdoor use (650°) | | |
| Polycarbonate housing (960°C) | PO | |
| End caps & fixing straps 304L stainless steel | - | |
| End caps & fixing straps 316L stainless steel | MR | |

Accessories

To be ordered separately



| | | |
|--|----------|--|
| Stainless steel cable plate kit (IP40) | 17500020 | Pre-cabling 1,5m 3G1.5 (3 wires) CAB0007 Braided tinned copper cable Pre-cabling 1,5m 5G1.5 (3 wires) CAB0010 Braided tinned copper cable |
|--|----------|--|



Vouet Sensor

ø100 wall or ceiling light with integrated sensor

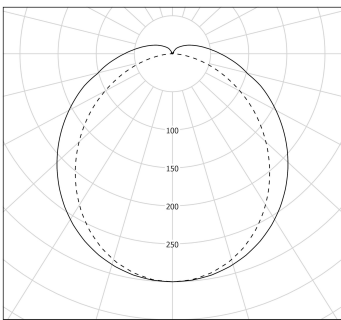


Sammode

Specification



Photometry



ULR = 10%

Technical characteristics

| | |
|--|---|
| Light source | High-efficiency removable LED module (CRI>80, 3 SDCM) 50 000 h L80/B10 at 25°C Photobiological hazard : None (RG0) |
| Optics | Use of a satin-finish housing or internal film for a homogeneous light distribution Light mixing chamber |
| Lighting comfort | Controlled glare: UGR ≤25 |
| Control gear | Constant current driver Option RC : with switch-off warning Option RCP : with permanent standby function at 10% Built-in presence sensor |
| Supply voltage | 220-240V 50/60Hz |
| Electrical class | Class II |
| Operating temperature | -25°C to +35°C |
| Easy installation and maintenance | |
| Connection | With nickel-coated brass cable gland for cable Ø 5-14 mm To a 3 x 2,5 mm² disconnectable terminal block |
| Opening and closing | Quick, with just one screw |
| Mounting | 2 stainless steel fixing straps with HSHC screw (with variable centre distance) |
| LED engine maintenance | Maintenance without tampering with the cable by removal of the end cap without cable entry Easily removable LED modules and driver |
| Materials | |
| Housing | Ø100 Co-extruded polycarbonate/PMMA for inside/outside use |
| End caps and fixing straps | 304L stainless steel |
| Standards | |
| Waterproofness | IP66, IP68, IP69K |
| Resistance to IK shocks | IK10 |
| Fire resistance | 650°C |