

Nilak, Qinu & Qanik

Luminaires with frosted effect films ø70, 100 and 133



Nilak, Qinu & Qanik

Luminaires with frosted effect films ø70, 100 and 133



Qinu



Qanik



Nilak

The Lö collection was born of the partnership between Sammode and Yann Kersalé, and all of the Lö models have been assigned Inuit names symbolising the different types of ice. Two different facets are created with the two translucent films, one with a prism effect and the other with a mirror effect. By night, these films send sparkles out into the dark, while by day, they reflect the surrounding environment.

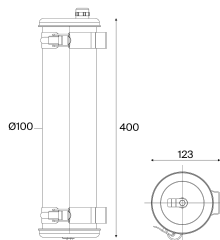


Nilak, Qinu & Qanik

Luminaires with frosted effect films ø70, 100 and 133



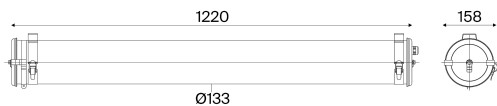
Sammode



Nilak

Wall light

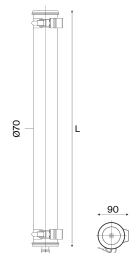
Flux (lm)	L (mm)	Designation	Code	Watt
800	400	NILAK 100 400 800-827 BPI CL1	81015021	20



Qinu

Pendant light

Flux (lm)	L (mm)	Designation	Code	Watt
3200	1220	QINU 133 1200 3200-827 CL1 SUSP	81015022	71



Qanik

Wall light

Flux (lm)	L (mm)	Designation	Code	Watt
950	700	QANIK 70 700 950-827 CL1	81015020	23
1400	1000	QANIK 70 1000 1400-827 CL1	81015030	33

Options

Fixing straps	Materials	Lighting management
	Coextruded polycarbonate/PMMA housing for Indoor/Outdoor use (650°)	Electronic gear unit for DALI dimming
	Polycarbonate housing (960°C)	-
	End caps & fixing straps 304L stainless steel	PO
	End caps & fixing straps 316L stainless steel	MR
Qanik		
Fixing straps	-	
Fixing straps with HSHC screw	BCV	
Fixing straps with tamper-resistant Torx screw	BCVT	
Nilak & Qinu		
Fixing straps	-	
Fixing straps with HSHC screw	BRV	
Fixing straps with tamper-resistant Torx screw	BRVT	



Nilak, Qinu & Qanik

Luminaires with frosted effect films ø70, 100 and 133



Sammode

Accessories

To be ordered separately

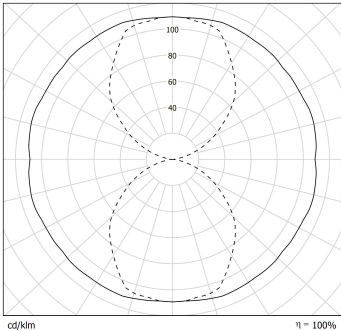


Stainless steel cable plate kit (IP40)	17500020	Pre-cabling 3m 3G1.5 (3 wires)	CAB0008
		Braided tinned copper cable	
		Pre-cabling 3m 5G1.5 (5 wires)	CAB0011
		Braided tinned copper cable	
		Pre-cabling 1,5m 3G1.5 (3 wires)	CAB0007
		Braided tinned copper cable	
		Pre-cabling 1,5m 5G1.5 (3 wires)	CAB0010
		Braided tinned copper cable	

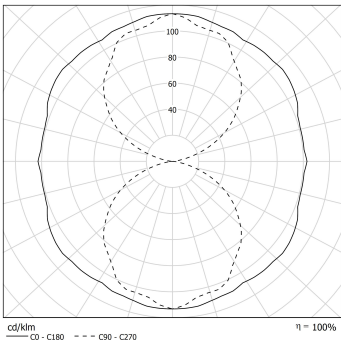
Specification



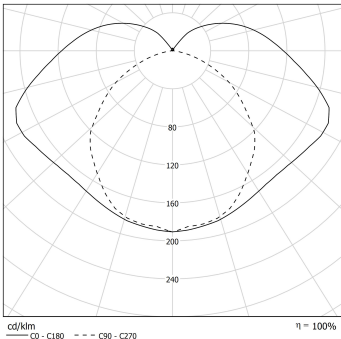
Photometry



Nilak



Qinu



Qanik

Design

Designer Yann Kersalé

Technical characteristics

Light source High-efficiency removable LED module (CRI>80, 3 SDCM)
Color temperature 2700K
50 000 h L80/B10 at 25°C
Photobiological hazard : None (RG0)

Optics Use of an internal film for a homogeneous light distribution

Lighting comfort Luminance control through diffusing optical systems

Control gear Nilak : Constant Current Driver for push-button dimming
Qinu & Qanik : Constant Current Driver (non-dimmable)

Supply voltage 220-240V 50/60Hz

Electrical class Class I

Operating temperature -20°C to +30°C

Easy intallation and maintenance

Connection Nilak : Provided with 4 m 3G1,5 cable with tinned copper meshwork under transparent tubing
Qinu : With nickel-coated brass cable gland for cable Ø 5-14 mm
Qanik : With nickel-coated brass cable gland for cable Ø 5-12 mm
Qinu & Qanik : To a 3 x 2,5 mm² disconnectable terminal block

Opening and closing Nilak : Opening by releasing the screw and extracting the diffuser
Qanik : by tightening the nut on the cable gland

Mounting 2 stainless steel fixing straps (with variable centre distance)
Qinu : Provided with 3 m suspension wires

LED engine maintenance Qinu : Maintenance by releasing the 2 closing screws, removing the end cap and extracting the gear tray
Qanik : Gear tray fixed on the end cap supporting the cable entry
Easily removable LED modules

Materials

Housing Co-extruded polycarbonate/PMMA for inside/outside use

End caps and fixing straps 304L stainless steel

Standards

Waterproofness IP66, IP68, IP69K

Resistance to IK shocks IK10

Fire resistance 650°C