

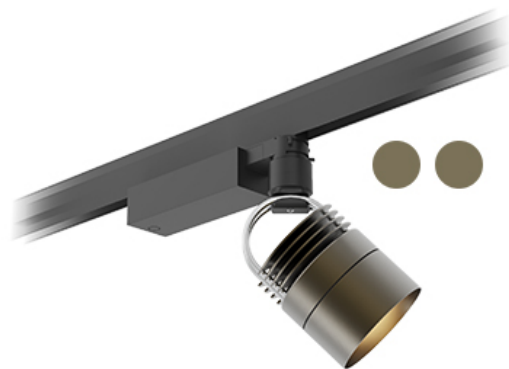
MOD on Track

Spotlight for track



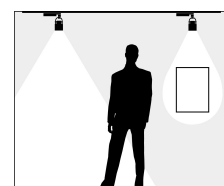
MOD on Track

Spotlight for track



Conceived by the German designer Stefan Diez for Sammode, the MOD on Track spotlight, equipped with its 3-lamp rail adapter, is ideal for when flexibility and scalability are the watchwords.

With its surprising design, generous proportions and an anodised aluminium head, MOD on Track is a spotlight that knows its place. In a reception hall or showroom, choose a perforated louvre crown and a wide-beam lens, to truly embellish the space. To accentuate objects and details, choose a collimator and narrow beam.



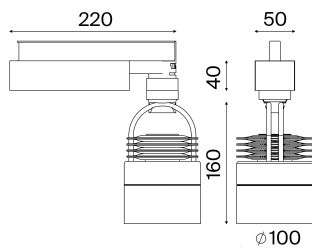


MOD on Track

Spotlight for track



Sammode



Collimator version

900 lm, 2700 K



Finishing	Endcap	Designation	Code	Watt
Silver	Silver	MOD TRAK S 900-927 BL-S SB TKH-BK	88100397	13
Black	Black	MOD TRAK BK 900-927 BL-BK SB TKH-BK	88100131	13
Champagne	Champagne	MOD TRAK CH 900-927 BL-CH SB TKH-BK	88100040	13
Bronze	Bronze	MOD TRAK BZ 900-927 BL-BZ SB TKH-BK	88100041	13

Perforated collimator version

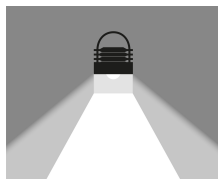
900 lm, 2700 K



Finishing	Endcap	Designation	Code	Watt
Silver	Silver	MOD TRAK S 900-927 GR-S WB TKH-BK	88100399	13
Black	Black	MOD TRAK BK 900-927 GR-BK WB TKH-BK	88100132	13
Champagne	Champagne	MOD TRAK CH 900-927 GR-CH WB TKH-BK	88100044	13
Bronze	Bronze	MOD TRAK BZ 900-927 GR-BZ WB TKH-BK	88100045	13

Glass version

900 lm, 2700 K



Finishing	Endcap	Designation	Code	Watt
Silver	Clear	MOD TRAK S 900-927 GL-CL TKH-BK	88100401	13
Black	Green	MOD TRAK BK 900-927 GL-GN TKH-BK	88100133	13
Champagne	Amber	MOD TRAK CH 900-927 GL-AM TKH-BK	88100048	13
Bronze	Smoked	MOD TRAK BZ 900-927 GL-SM TKH-BK	88100049	13

Options

Collimator in anodised aluminium	Perforated collimator in anodised aluminium	Tempered glass shade
Silver Black Champagne Bronze	BL-S BL-BK BL-CH BL-BZ Silver Black Champagne Bronze	GR-S GR-BK GR-CH GR-BZ Frosted Clear Green Amber Smoked
GL-FR GL-CL GL-GN GL-AM GL-SM		
Lenses	Color temperature	Color of adapter for 3-phase rail
	2700K 3000K 4000K	927 930 940 Black Grey White
Spot Beam 20° Medium Beam 30° Wide Beam 50°	SB MB WB Lighting management Electronic gear unit for DALI dimming Casambi Bluetooth control	TKH-BK TKH-GR TKH-WH
		RD RB

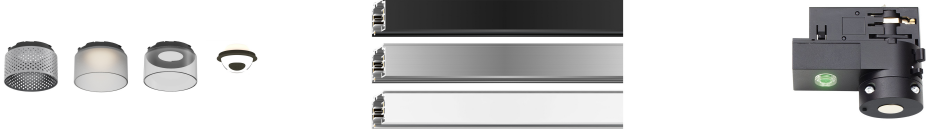


MOD on Track

Spotlight for track



Accessories



The interchangeable crowns and lenses can be ordered separately. Refer to us

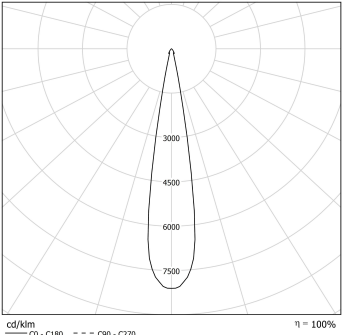
Tracks and accessories. Refer to us

Track compatibility tester 11003200721

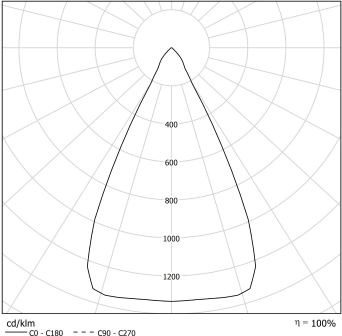
Specification



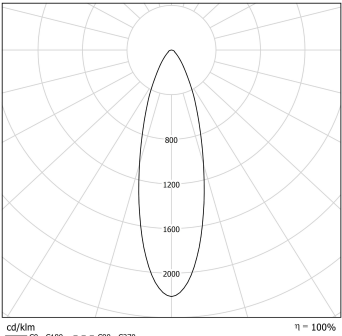
Photometry



Collimator + Spot Beam Lens



Perforated collimator + Wide Beam Lens



Clear or tinted glass shade + Medium Beam Lens

Design	
Designer	Stefan Diez
Technical characteristics	
Light source	CoB LED Module 900 lm (without endcap, IRC>90, 3SDCM) 50 000 h L80/B10 at 25°C Photobiological hazard : Group 1
Control gear	Constant current driver (non-dimmable)
Supply voltage	220-240V 50/60Hz
Electrical class	Class I
Operating temperature	-5 °C to +35 °C
Easy intallation and maintenance	
Connection	Equipped with a three-phase rail adapter, check compatibility with existing rail
Materials	
Head and device housing	Color anodizing Aluminium, nickel-plated copper hoop
Endcap	Full or perforated collimator : Color anodizing Aluminium Glass : tinted or clear tempered glass, according to versions
Lens	Tempered glass
Standards	
Waterproofness	IP20 (indoor use)
Fire resistance	850°C