

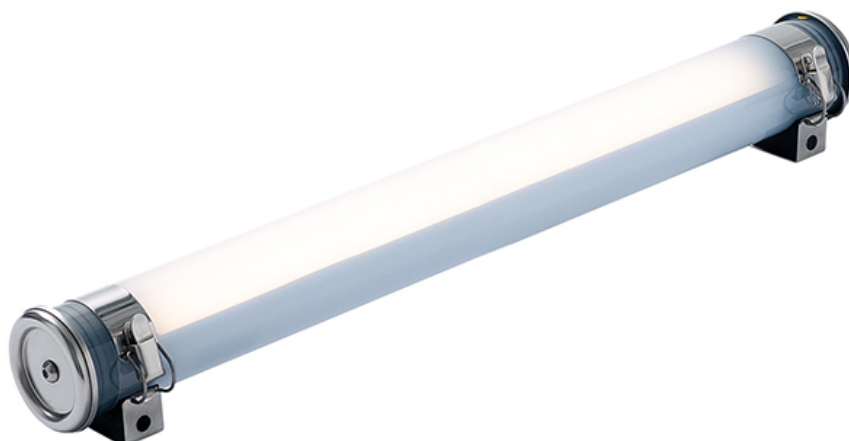
FOUCAULT 24V

ø70 compact tubular fitting for lighting for machines and processes in 24V DC



FOUCAULT 24V

ø70 compact tubular fitting for lighting for machines and processes in 24V DC



The FOUCAULT 24V makes the lighting of machinery easy, smart and scalable! It is perfect for providing great visibility in confined spaces. Its CRI80 LED light is at once powerful, uniform and glare-free. It is resistant to humidity, steam and vapours, dust, impacts, oils and lubricants. It can be fitted into any space thanks to the fixing straps that can be oriented through 360°, and can be installed very easily thanks to the quick-connect fasteners. A unique benefit of its design makes it 100% repairable and scalable without affecting its watertight characteristics!



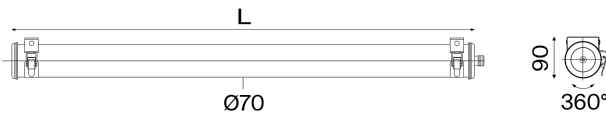


FOUCAULT 24V

Ø70 compact tubular fitting for lighting for machines and processes in 24V DC



Sammode



Top-up lighting versions

CRI 80, 4000K

Flux (lm)	L (mm)	Designation	Code	Watt
400	430	FOU70 24V 450 400-840 POME 113LN	34035315	3
600	575	FOU70 24V 575 600-840 POME 113LN	34035327	4
800	715	FOU70 24V 700 800-840 POME 113LN	34035316	6
1200	995	FOU70 24V 1000 1200-840 POME 113LN	34035309	8
1600	1275	FOU70 24V 1300 1600-840 POME 113LN	34035310	12

No risk of glare or a stroboscopic effect, in compliance with applications under EN 1837 "Safety of machinery - Integral lighting of machines"

Reinforced versions

CRI 80, 4000K

Flux (lm)	L (mm)	Designation	Code	Watt
800	430	FOU70 24V 450 800-840 POME 113LN	34035306	6
1200	575	FOU70 24V 575 1200-840 POME 113LN	34035307	8
1600	715	FOU70 24V 700 1600-840 POME 113LN	34035308	12

No risk of glare or a stroboscopic effect, in compliance with applications under EN 1837 "Safety of machinery - Integral lighting of machines"

Options

Materials	Disconnectable plugs	Color temperature	
Polycarbonate housing	PO	3000K	830
Coextruded polycarbonate/ PMMA housing with high chemical resistance	POME	4000K	840
End caps & fixing straps 304L stainless steel	-		
End caps & fixing straps 316L stainless steel	MR		
Fixing straps			
Fixing straps with HSHC screw	BAV		



IP68/69K quick-lock plug with
threaded ring (capacity: Ø8 to 10
mm)
IP65 angular socket for screw
locking (capacity: Ø6 to 13 mm)

PS2

PB2

Accessories

To be ordered separately



Magnetic fixings kit for 2 fixing straps (320N per magnet)	PU45080	Kits for APSAD compliance		1m HO7-RNF pre-wired cable 2x1,5 ²	
		2 x 20 cm 304L stainless steel extensions	PU44277	Stripped free end	CAB0173
		2 x 20 cm 316L stainless steel extensions	PU47378	Wieland® plug IP68/IP69K	CAB0174
		2 x 5 cm 304L stainless steel extensions	PU44278	(capacity : Ø6-10mm)	
		2 x 5 cm 316L stainless steel extensions	PU45880	Wieland® plug and Y splitter for loop-in/out	CAB0175



FOUCAULT 24V

ø70 compact tubular fitting for lighting for machines and processes in 24V DC

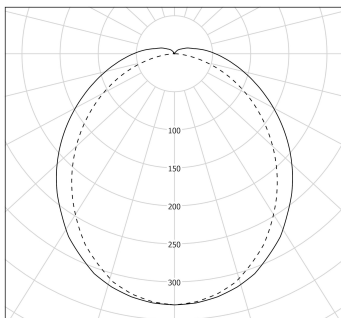


Sammode

Specification



Photometry



cd/klm
C0 - C180 - - - C90 - C270

Technical characteristics

Light source	High-efficiency removable LED module (CRI>80, 3 SDCM) 50 000 h L80/B10 at max. operating temperature Photobiological hazard : None (RG0)
Optics	Special satin-finish housing for LED Light mixing chamber
Heat management	Aluminium heat sink
Control gear	Constant current driver (non-dimmable)
Supply voltage	24V DC +/-10%
Electrical class	Class III
Operating temperature	-20°C to +40°C

Easy intallation and maintenance

Connection	With nickel-coated brass cable gland for cable Ø 5-12 mm To a 3 x 2,5 mm ² disconnectable terminal block
Mounting	2 stainless steel fixing straps with spring clip and EPDM support pad, with variable center distance and 360° orientation
LED engine maintenance	Easily removable LED modules and driver Maintenance without tampering with the cable by removal of the end cap without cable entry Closing by tightening the nut on the cable gland Close'N Connect Patented system with automatic electrical connection/disconnection on closure

Materials

Housing	Special polycarbonate housing protected by a coextruded PMMA layer
End caps and fixing straps	304L stainless steel
Gaskets	Peroxide-cured EPDM
Method of construction	One-piece housing with reinforced ingress protection by radial expansion of the seal

Standards

Waterproofness	IP66, IP68, IP69K
Resistance to IK shocks	IK10
Fire resistance	650°C
Vibration resistance	Meets the severe application requirements of standard EN 60598-1 (tested according to IEC 60068-2-6)