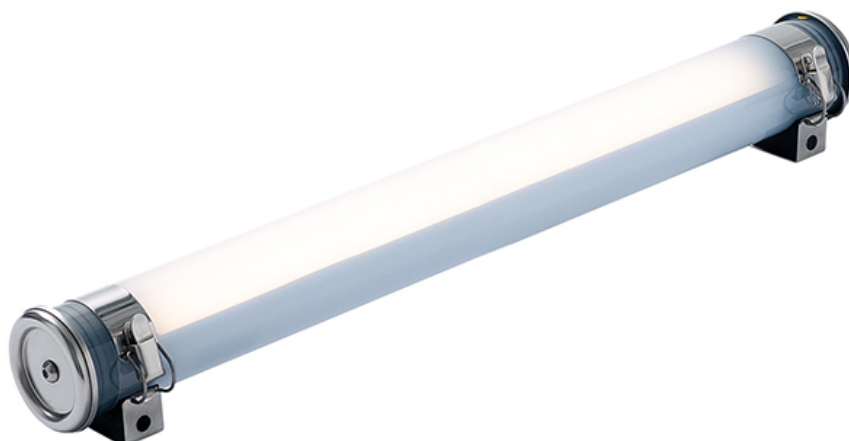




FOUCAULT

ø70 compact tubular light fitting for confined industrial spaces



The FOUCAULT offers high-performance, long-lasting lighting anywhere, thanks to its top-level impermeability and the uncompromising choice of LED components and materials, born of our long experience of industrial environments. With an extensive choice of lengths and light outputs, it is suited to any kind of space, including the most confined areas, courtesy of the compact versions. It is easy to install, even with through wiring, and 100% repairable and scalable, thanks to its sliding gear tray with patented automatic connector. A distillation of technology!



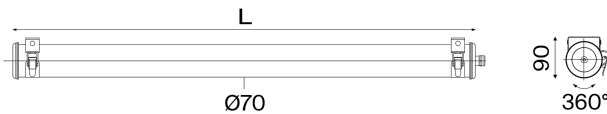


FOUCAULT

ø70 compact tubular light fitting for confined industrial spaces



Sammode



Class 1 version

CRI 80, 4000K

Flux (lm)	L (mm)	Designation	Code	Watt
800	430	FOU70 450 800-840 POME 113LN	34035301	8
1200	575	FOU70 575 1200-840 POME 113LN	34035302	10
1600	715	FOU70 700 1600-840 POME 113LN	34035303	13
2400	995	FOU70 1000 2400-840 POME 113LN	34035304	20
3200	1275	FOU70 1300 3200-840 POME 113LN	34035305	25
4000	1560	FOU70 1600 4000-840 POME 113LN	34035318	31
4800	1840	FOU70 1850 4800-840 POME 113LN	34035319	36

Models equipped with the patented Close'n Connect® system, an automatic internal connection mechanism for ease of installation and maintenance.

Class 2 version

CRI 80, 4000K

Flux (lm)	L (mm)	Designation	Code	Watt
800	430	FOU70 450 800-840 CL2 POME 113LN	34035320	8
1200	575	FOU70 575 1200-840 CL2 POME 113LN	34035321	10
1600	715	FOU70 700 1600-840 CL2 POME 113LN	34035322	13
2400	995	FOU70 1000 2400-840 CL2 POME 113LN	34035323	20
3200	1275	FOU70 1300 3200-840 CL2 POME 113LN	34035324	25
4000	1560	FOU70 1600 4000-840 CL2 POME 113LN	34035325	31
4800	1840	FOU70 1850 4800-840 CL2 POME 113LN	34035326	36

Models equipped with the patented Close'n Connect® system, an automatic internal connection mechanism for ease of installation and maintenance.

Options

Materials	Disconnectable plugs	Color temperature
Polycarbonate housing	PO	3000K 830
Coextruded polycarbonate/ PMMA housing with high chemical resistance	POME	4000K 840
End caps & fixing straps 304L stainless steel	-	
End caps & fixing straps 316L stainless steel	MR	
Fixing straps	IP68/69K quick-lock plug with threaded ring (capacity: Ø8 to 10 mm)	PS2/PS3
	IP65 angular socket for screw locking (capacity: Ø6 to 13 mm)	PB2/PB3
		Lighting management
		Built-in presence sensor (length increased by 85mm) SI
		Electronic gear unit for DALI dimming RD
		Switch-off warning function (for sensor/timer) RC
		Electrical class
		Class I -
		Class II CL2
		Through-wiring
		Through wiring (except 450mm) TR



Fixing straps
Fixing straps with HSHC screw

Accessories

To be ordered separately



Magnetic fixings kit for 2 fixing
straps (320N per magnet)

PU45080



Kits for APSAD compliance

2 x 20 cm 304L stainless steel
extensions

PU44277

2 x 20 cm 316L stainless steel
extensions

PU47378

2 x 5 cm 304L stainless steel
extensions

PU44278

2 x 5 cm 316L stainless steel
extensions

PU45880



1m HO7-RNF pre-wired cable 3G1,5²

Stripped free end

CAB0080

Wieland® plug IP68/IP69K

CAB0095

(capacity : Ø10-14mm)

Wieland® plug and Y splitter for
loop-in/out

CAB0145



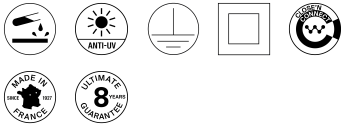
FOUCAULT

ø70 compact tubular light fitting for confined industrial spaces

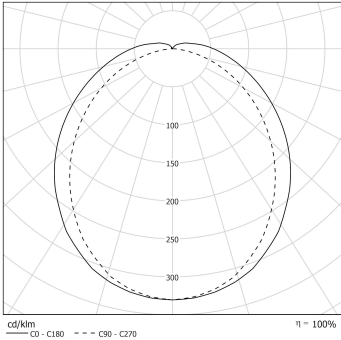


Sammode

Specification



Photometry



Technical characteristics	
Light source	High-efficiency removable LED module (CRI>80, 3 SDCM) 70 000 h L80/B10 at max. operating temperature Photobiological hazard : None (RG0)
Optics	Special satin-finish housing for LED Light mixing chamber
Heat management	Aluminium heat sink
Control gear	Constant current driver (non-dimmable) Electronic compatible with central source
Supply voltage	220-240V ±10% 0/50/60Hz
Electrical class	Class I or Class II according to model
Operating temperature	-20°C to +40°C
Easy intallation and maintenance	
Connection	With nickel-coated brass cable gland for cable Ø 5-12 mm To a 3 x 2,5 mm ² disconnectable terminal block
Mounting	2 stainless steel fixing straps with spring clip and EPDM support pad, with variable center distance and 360° orientation
LED engine maintenance	Easily removable LED modules and driver Maintenance without tampering with the cable by removal of the end cap without cable entry Closing by tightening the nut on the cable gland Close'N Connect Patented system with automatic electrical connection/disconnection on closure
Materials	
Housing	Special polycarbonate housing protected by a coextruded PMMA layer
End caps and fixing straps	304L stainless steel
Gaskets	Peroxide-cured EPDM
Method of construction	One-piece housing with reinforced ingress protection by radial expansion of the seal
Standards	
Waterproofness	IP66, IP68, IP69K
Resistance to IK shocks	IK10
Fire resistance	650°C
Vibration resistance	Meets the severe application requirements of standard EN 60598-1 (tested according to IEC 60068-2-6)